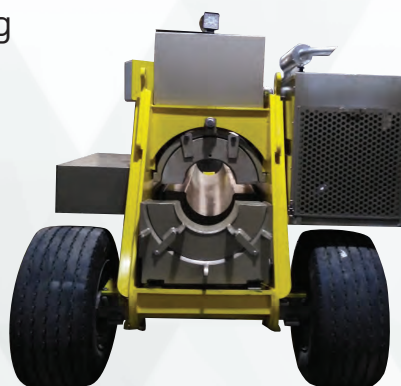




## 6" - 24" PIPE BENDING MACHINE

- With the hydraulic pistons placed under the machine  
Shaft breaks removed  
Wear of shaft slots reduced  
Less energy stabil bending  
Lightweight ergonomic machines  
Safe working area for operator
- PTO available for mandrel feeding
- Equipped with winch for pipe handling
- Polyurethane lined bending sets available
- Wide bending range
- CE Certification

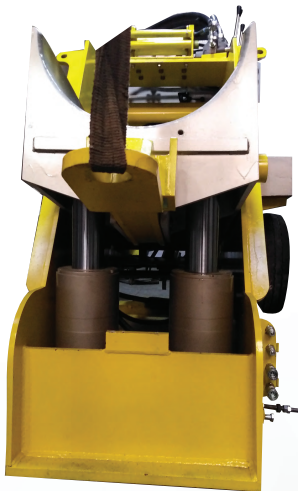


## MACHINE DATA



### ENGINE

Model	Kohler KDJ 2504TM
Power	41 kW
Cylinders	4
R.P.M.	2800
Motor Power	35.5Kw / 48Hp
Displacement	1861 cm <sup>3</sup>



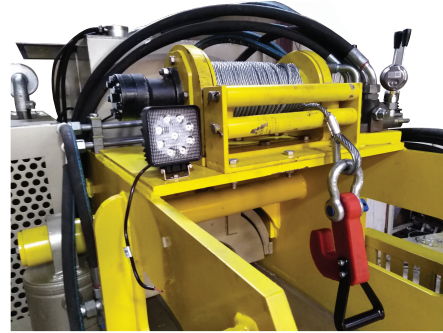
### HYDRAULIC CYLINDERS

Outboard Cylinder	2 x 200mm x 315mm
Inboard Cylinder	2 x 150mm x 180mm
Wedge Cylinder	1 x 110mm x 570mm



### HYDRAULIC SYSTEM

Model	Italian PZB brand
Max Pressure	250 Bar
Max Oil Flow	125 l/min
Pump Type	Gear



### WINCH

Type	Hydraulic gear winch
Max Opr. Press.	150 bar
Max Feed Flow	40 l/min
Steel Wire Length	40 m
Steel Wire Dia.	12mm
Speed	8 m/min

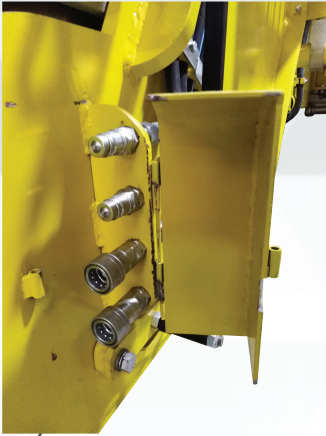


### TANK CAPACITIES

Fuel Tank	80 L (diesel)
Hydraulic Tank	130 L

### FRAME

High Strength C. Steel	S355JR
------------------------	--------



● Hydraulic PTO for Mandrel

Quick Coupling ½"

Sheltered jack system for all movement hydraulic mandrel



● Bending Sets

Denksan bending sets are

- Manufactured with high quality steel, welded and reinforced in high stress areas for maximum strength and resistance.
- The internal surface is finished with tooling machines to guarantee the required accuracy.
- The internal can also be proposed with polyurethane lining upon request.
- Bending sets are compatible with bending machines by other manufacturer.



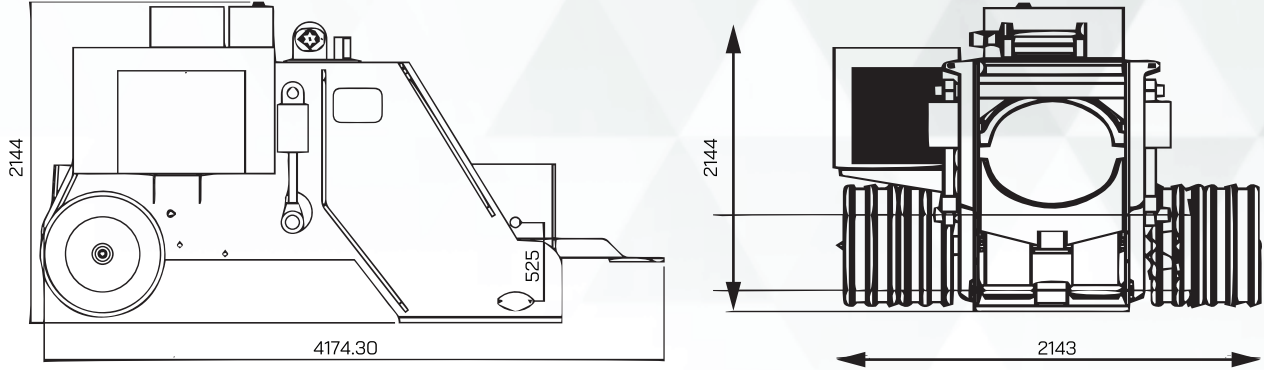
● Wheels & Manual Hand Break

- Wide-based tires ideal for driving in mud and snow
- Durable
- Limited maintenance



● Operator Platform

- The position of the control platform makes bending machine unique in terms of operating comfort
- Guarantees maximum visibility
- Low noise levels to the operator
- Foldable stairs and platform



### DIMENSIONS

Lenght	4174 mm
Width	2143 mm
Height	2144 mm
Weight	7000 kg

Pipe Size	X52	X60	X65	X70	Radius	Max Degree
6/168	2/50.80	2/50.80	2/50.80	2/50.80	3.95	135
8/219	2/50.80	2/50.80	2/50.80	2/50.80	4.6	115
10/273	2/50.80	2/50.80	2/50.80	2/50.80	6.1	85
12/234	2/50.80	2/50.80	2/50.80	2/50.80	7.6	70
14/356	2/50.80	2/50.80	2/50.80	2/50.80	10.35	50
16/406	2/50.80	3.19/81	2.66/67.5	2.66/67.5	11.6	45
18/457	2.38/60.5	1.89/48	1.69/43	1.69/43	15.85	33
20/508	1.65/42	1.38/35	1.24/31.5	1.24/31.5	19.5	27
22/559	1.26/42	1.06/27	0.96/24.5	0.96/24.5	24	22
24/610	1.02/26	0.87/22	0.79/20	0.79/20	29.5	20

Maximum tickness bended in function of steel type - All data are expressed for inch/mm