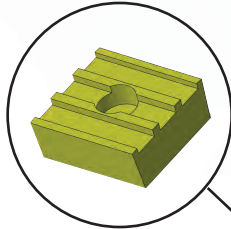
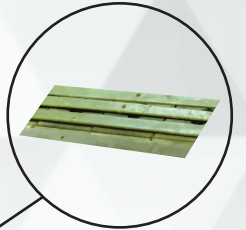


HYDRAULIC WEDGE MANDRELS

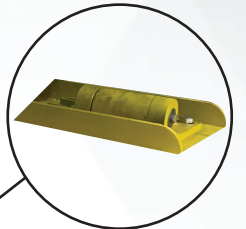
- Denksan-Hydraulic Wedge Mandrels are manufactured to suit various pipe wall thickness up to X80 grade pipe.
- Hydraulic power to actuate the mandrels is supplied from the bending machine's hydraulic system
- Denksan-Hydraulic Mandrels are manufactured wedge type from 16" to 60" and polyurethane disc type from 4" to 14".
- Denksan-Hydraulic Wedge Mandrel design allows smooth bends with no pipe buckling and shape distortion.
- Polyurethane shoes and polyurethane-lined support bars and wheels are used in the mandrels to avoid damage to internal coated pipes.
- Shoes are made up of high grade 90 shore polyurethane.
- The wedges are made up of abrasion-resistant hardox steel. It works smoothly under high friction and pressure.
- The support bars are made up of spring steel having high yield strength so that after the bending process it returns to its original shape without deforming.
- The mandrels are CE certified.
- The travel wheels are pivotally mounted to provide self-leveling of the mandrel in the pipe.
- Double angle hardened steel wedges provide fast approach and powerful locking action



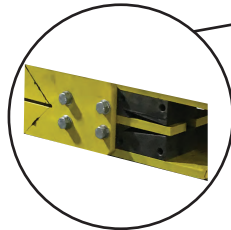
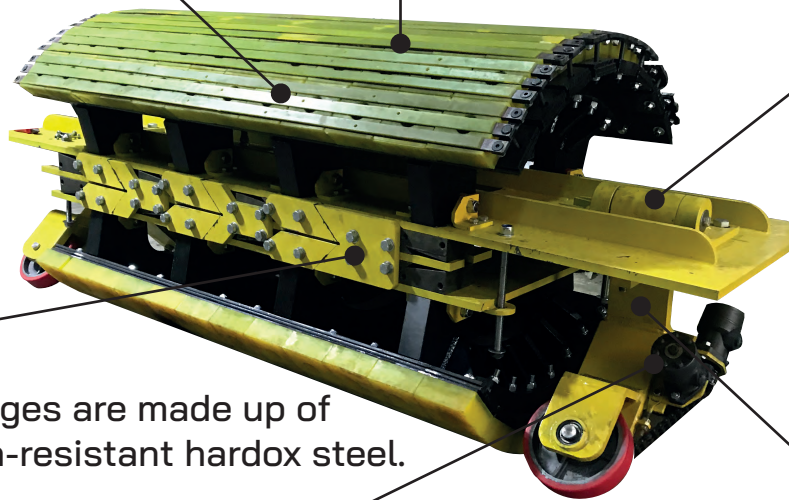
Shoes are made up of high grade 90 shore polyurethane.



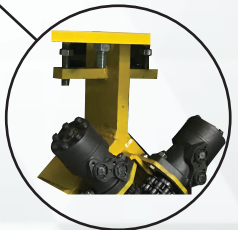
The support bars are made up of spring steel.



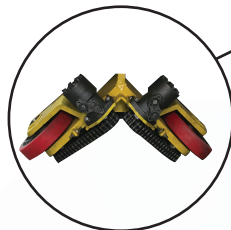
The travel wheels are pivotally mounted to provide self-leveling of the mandrel in the pipe.



The wedges are made up of abrasion-resistant hardox steel.



Travel wheels raise from the pipe wall when the mandrel is expanded.



Drive system

- Up to 14": manual
- 16" to 24": by single hydraulic motor and 2 driving wheels. Drive system operates by roller chain sprocket mechanism.
- 26" to 60": by twin hydraulic motor and 2 driving wheels. Drive system operates by roller chain sprocket mechanism.

Model No	Pipe Size		Lenght		Width		Height		Cube		Weight	
	inches	mm	inches	mm	inches	mm	inches	mm	ft 3	m3	lb	kg
HWM 8	8	203	52,8	1340	6,3	160	4,7	120	0,91	0,03	187	85
HWM 10-12	10	254	57,5	1460	7,1	180	8,1	207	1,92	0,05	209	95
	12	305	57,5	1460	7,1	180	8,1	207	1,92	0,05	286	130
HWM 16-18	16	406	70,5	1790	10,2	260	13,4	340	5,59	0,16	660	300
	18	457	70,5	1790	10,2	260	13,4	340	5,59	0,16	660	300
HWM 20-24	20	508	70,5	1790	13,4	340	17,3	440	9,46	0,27	1430	650
	22	558	70,5	1790	13,4	340	17,3	440	9,46	0,27	1430	650
	24	588	70,5	1790	13,4	340	19,3	490	10,53	0,30	1430	650
HWM 26-30	26	660	86,2	2190	16,5	420	19,3	490	15,91	0,45	2200	1000
	28	711	86,2	2190	16,5	420	24,8	630	20,46	0,58	2200	1000
	30	762	86,2	2190	16,5	420	24,8	630	20,46	0,58	2420	1100
HWM 32-36	32	813	102,4	2600	29,3	744	26,8	680	46,45	1,32	2640	1200
	34	864	102,4	2600	29,3	744	26,8	680	46,45	1,32	2640	1200
	36	914	102,4	2600	29,3	744	27,2	690	47,13	1,33	3300	1500
HWM 40-42	40	1016	102,4	2600	35,9	912	27,8	706	59,11	1,67	3850	1750
	42	1067	102,4	2600	35,9	912	27,8	706	59,11	1,67	3850	1750
HWM 46-48	46	1168	108,3	2751	38,5	978	38,6	980	93,10	2,64	10560	4800
	48	1219	108,3	2751	38,5	978	38,6	980	93,10	2,64	10560	4800
HWM 52-54	52	1321	122,0	3100	43,3	1100	46,0	1168	140,64	3,98	11484	5220
	54	1372	122,0	3100	43,3	1100	47,2	1200	144,49	4,09	11484	5220
HWM 56	56	1422	143,7	3650	53,3	1354	50,0	1270	221,62	6,28	13200	6000
HWM 60	60	1524	145,7	3700	55,1	1400	53,9	1370	250,58	7,10	13420	6100

